

Buggy Wheels or Wagon Wheels Quilt Block from Maine Quilt Company

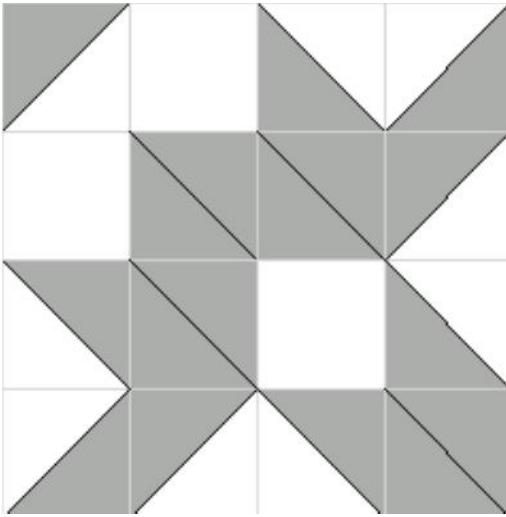


Buggy Wheel or Wagon Wheel quilt block.

Size: 16 ½ inches (finishes at 16 inches)

Pieces Required

- 12 (2 ½") light squares
- 18 (2 7/8") light squares cut in half diagonally
- 34 (2 7/8") dark squares cut in half diagonally



Sewing

- Sew long edges together to make 36 dark/light HSTS (half square triangle squares)
- Sew long edges together to make 16 dark/dark HSTS
- Following Figure 1, stitch HSTS and (2 ½") squares together to make four rows, then stitch the four rows together to make one section. Make 4 sections.

Figure 1: One Section (Shading indicates dark, non-shading indicates light)

Rotate one section 90 degrees to the right (clockwise). Stitch this section to the right edge of one unrotated section to form half of the block as shown in Figure 2. Make two halves.

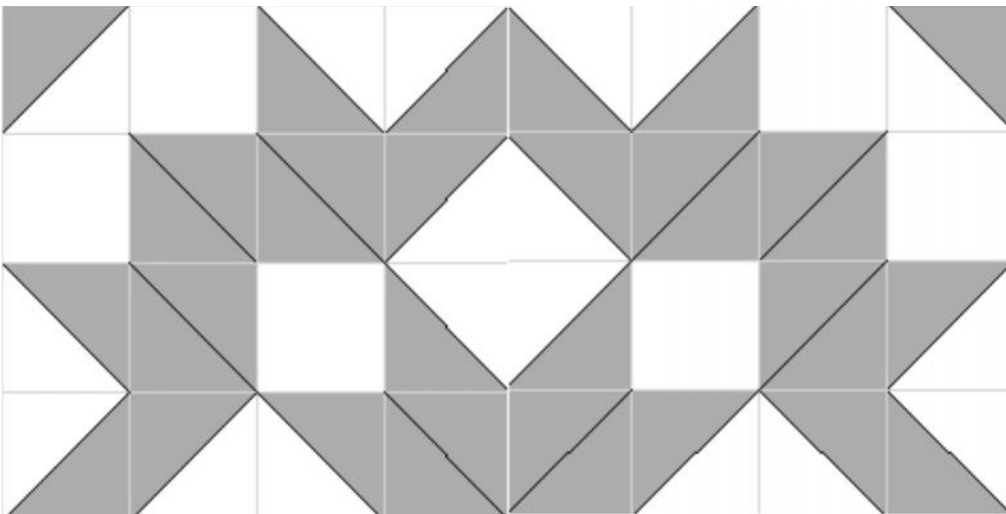


Figure 2: Half of Block

Buggy Wheels or Wagon Wheels Quilt Block from Maine Quilt Company

Rotate one section 180 degrees, then stitch the two halves together to form one block as shown in Figure 3.

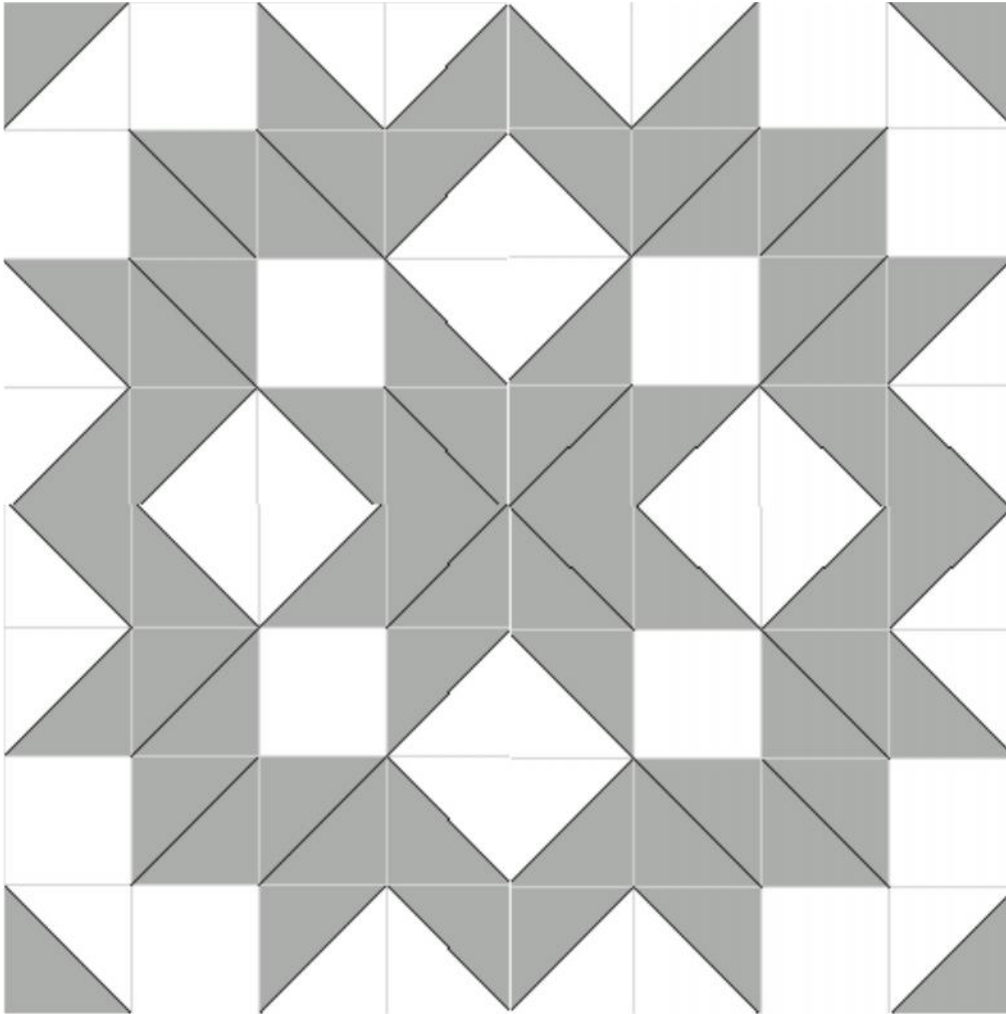


Figure 3: One Block.

Tips:

1. When stitching your HSTS, be careful not to stretch the bias edge of the triangles in order to keep your finished HSTS as square as possible.
2. After you form your HSTS, press the seam allowances towards the darker half. Trim the tail that extends beyond the square.
3. When stitching the HSTS together, keep SA going in opposite directions to reduce bulk. This may mean you need to repress some of the HSTS.
4. As you stitch the sections, follow the direction of HSTS carefully.
5. When you stitch the sections together to form the block, it may be necessary to flip a SA in the opposite direction then it was stitched within the section creating a slight twist in the SA. Do not worry about this. Once the block is stitched together, press all seam allowances flat as they are stitched.

Have fun and good luck!